

FEATHERLITE SCISSORS

Our patented Flex Series Scissors are designed to have a 300% increase in its shearing angulation compared to conventional scissors. The result is that, no matter what is being cut, any lateral pressure placed on the blades is not enough to separate the blades guaranteeing superior cutting efficiency and less damage to the tissue.

SUTURE SCISSORS

Reduce post operative patient time with our scissor and suture removal instrument. Use one hand and one instrument to easily cut and remove sutures.



FS FSS
Featherlite Suture Scissors

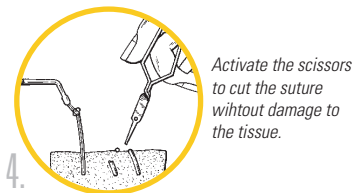
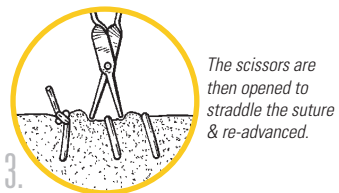
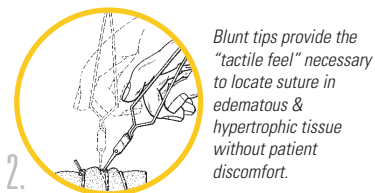
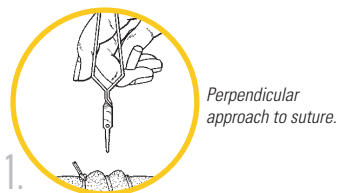


FS MTS
Micro Periodontal Tissue Scissors

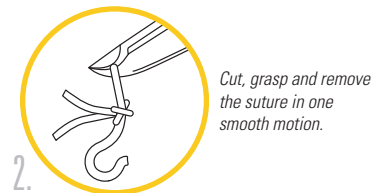
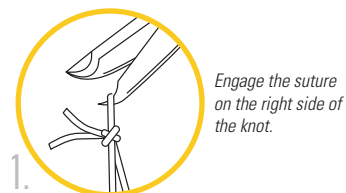


FS SFC
Suture Removal Scissors & Forceps Combination

For Model **FS FSS**:



For Model **FS SFC**:



NEEDLE HOLDER

Grasp any needle without splaying, breakage or loosening. Carbide jaws retain their shape and ability to hold at the tip long after other brands fail. No joint to snag sutures, more durable and lighter than titanium.

NEEDLE HOLDER & SUTURE CUTTER COMBO

Drive needles, tie knots and cut sutures with one instrument. These instruments reduce your overall procedure time and minimize the required instruments for the procedure.



FS NUS
 Universal 7"
 Needle Holder
Straight Tips



FS NCC
 Advanced 6"
 Needle Holder
 with Suture Cutter
Curved Tips



FS NCS
 Advanced 7"
 Needle Holder
 with Suture Cutter
Straight Tips



All conventional needle holders will expand over time preventing the instrument from effectively holding a suture. Our Needle Holders are designed to withstand significant expansion and pressure without losing its designed shape and function. The metal will always return to its designed shape and function as new.

RESTORATIVE UNIVERSAL FORCEPS

The GoldenDent™ Flex Series FS RFU is the perfect instrument for a secure and delicate hold on crowns, posts and any implant or restorative components for easy cementation and delivery. A clinical favorite amongst practitioners for handling delicate items in a secure manner with forceps tips that will not splay, break or loosen over time.



FS RFU

Restorative
Universal Forceps
with Thumb Lock



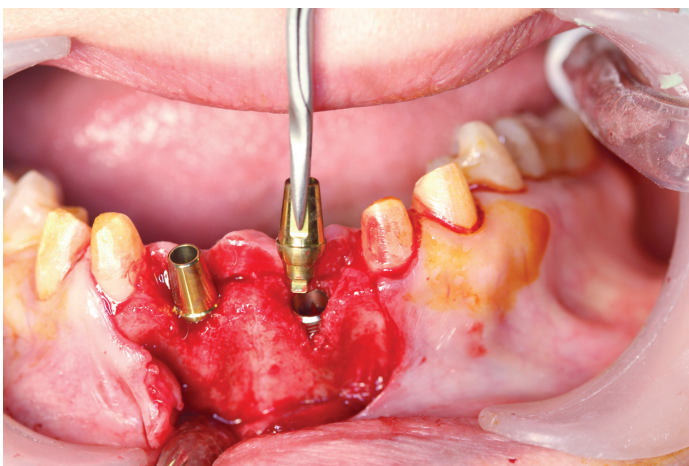
For placement of posts and removal of broken posts.



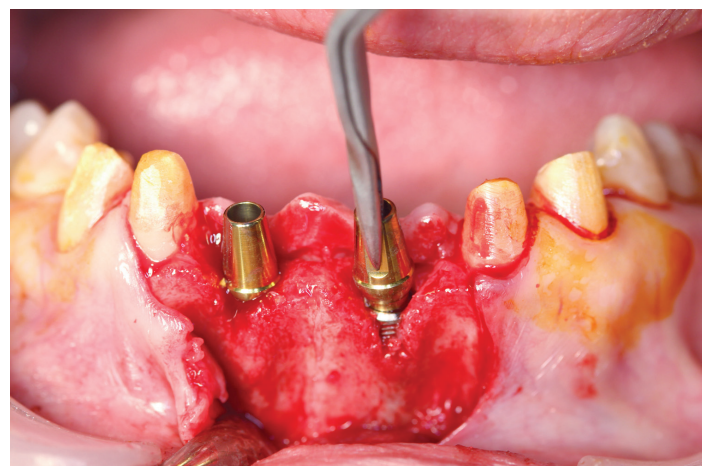
For precise placement of crowns, inlays and laminate/composite veneers, without the complications of finger manipulation.



For alignment and placement of implant related components.



Initial approach and alignment of abutment onto implant.



Final seating prior to permanent attachment.



TUNNELING GRAFT FORCEPS

The GoldenDent™ Flex Series FS TFU allows for a simplified method for the placement of tunnel connective tissue grafts. The FS TFU has straight tips that are diamond dusted to prevent slippage. The tips are also micro thin for easy uninterrupted passage through the tunnel to grasp the graft. The FS TFU has been clinically proven to save significant amounts of time to perform connective tissue grafts and is far superior than using other methods for such types of grafts.



FS TFU
Tunneling
Graft Forceps
with Straight Tips

Method of use for **FS TFU**:



1 Create tunnel using your standard methods.



2 Close the FS TFU handles & walk them through the tunnel.



3 Slightly open the handles & grasp the graft material.



4 Slowly pull or withdraw the graft through the tunnel to be placed in proper position.

Micro-Thin for uninterrupted passage through tunnel.

75° E/W Angulation ideal for all areas and applications.

Pressure Limiting Construction for maximal closure and locking to not damage graft.

Diamond Dusted Tips for slip resistance.

IMPLANT ABUTMENT FORCEPS

The GoldenDent™ Flex Series FS IA1 and FS IA2 instruments allow you to gently hold and stabilize healing abutments during the approach, positioning and placement into the implant. The driver easily screws the healing abutment into the implant while being secured by the Implant Abutment Forceps.



FS IA1

Implant Abutment Forceps

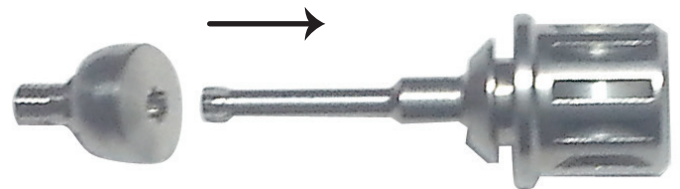
90° In-line Access



FS IA2

Implant Abutment Forceps

75° Off-set Access



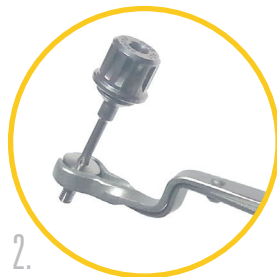
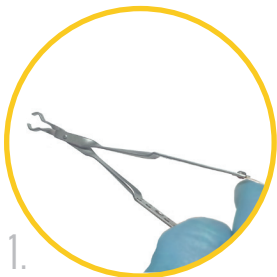
implant abutment

driver



attach driver to implant abutment

Method of use for **FS IA1** & **FS IA2**:



Spread the handles of the forceps apart, place the implant abutment between the semilunar prongs and allow the prongs to gently come to rest on the abutment. Use the forceps to approach the implant, place into position and screw into place.

ENDODONTIC FILE FORCEPS

The GoldenDent™ Flex Series FS EF1 and FS EF2 allow you to get a stable and secure grasp on K-files at any angle. Achieve greater access, better line of sight and more precise adaptation in less time. Reduced fatigue and stress on you and the patient.



FS EF1

Endodontic File
Forceps

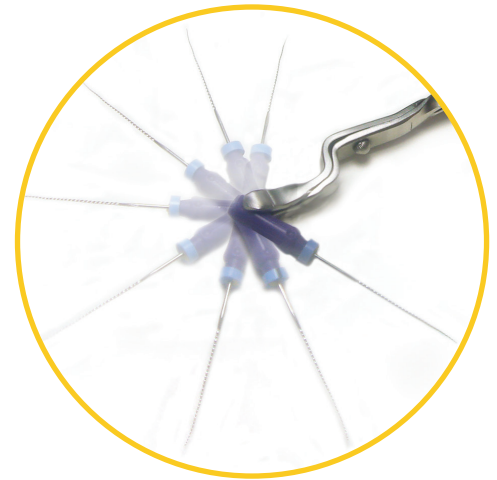
90° In-line Access



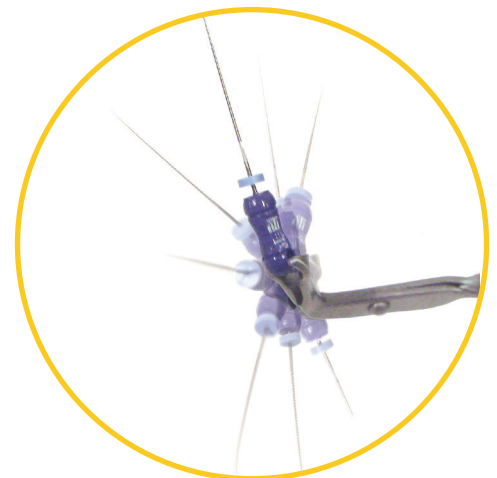
FS EF2

Endodontic File
Forceps

75° Off-set Access



The sharp prongs may impale the parachute holes facilitating 270°s of positioning in the X, Y, & Z axis for easy approach to all canals.



Ideal for use with mirrors or microscopes. For obturation they are ideal for use with Gutta-Percha and resin based carriers.

Transferred Oscillation Technology

The light-weight design of the instruments allows the instrument to act as an extension of your hand, where you can still achieve the tactile feel of the files as if they were in your fingers – but they are being held by an instrument.